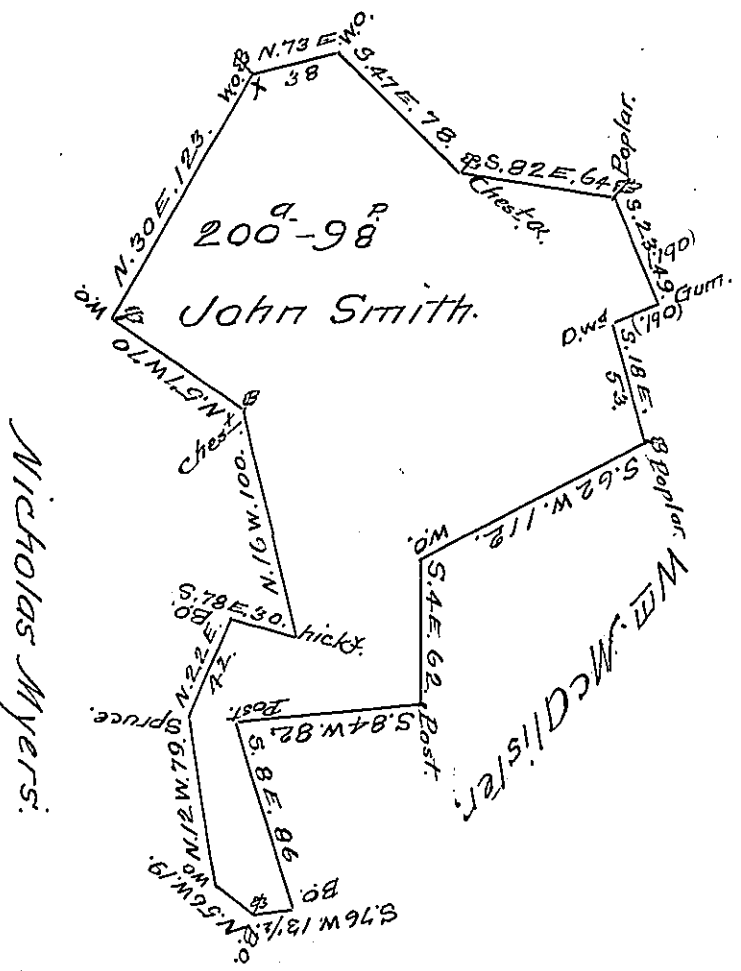


Shade mountain.



Draught of two hundred acres and ninety eight perches of land with 6 <sup>1</sup>/<sub>2</sub> Cent for roads situate in Greenwood-township in Mifflin county surveyed 30<sup>th</sup> October A. D. 1802 in pursuance of a Warrant granted to John Smith - dated <sup>2<sup>nd</sup></sup> ~~2<sup>nd</sup>~~ March 1785. Note two land warrants dated 16<sup>th</sup> May 1793 One to Polly Kimble & the other to John Lawrence were both laid on the above described land <sup>2<sup>nd</sup></sup> March 1785.

J. Harris D.S.

To Samuel Cochran Esq<sup>r</sup> }  
 Surve. Gen<sup>l</sup>. }

IN TESTIMONY that the above is a copy of the original remaining on file in the Department of Internal Affairs of Pennsylvania, made conformably to an Act of Assembly approved the 16th day of February 1833, I have hereunto set my hand and caused the Seal of said Department to be affixed at Harrisburg, this eleventh day of January 1907.

*Isaac P. Brown*  
 Secretary of Internal Affairs.